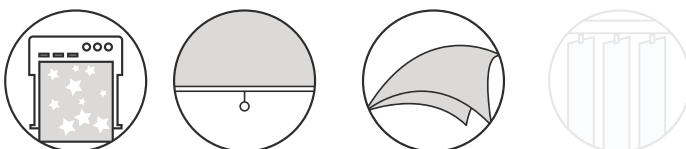


**Sergé 1%** OF 1%

**WK01A** FABRIC CODE

Screen with a small openness factor to protect even better against heat and glare. Thin and light for more designing possibilities. Very suitable for zip systems.

Can be used both exterior and interior.



# Sergé 1% OF 1%

WK01A FABRIC CODE

## Yarn

Technical specifications	Average Values	Standard
Titer	165 tex	ISO 1889 (2009)
Weighted composition	Glass 41.5%, PVC 58.5%	ISO 3801 (1977)
Diameter	0.38 mm	
Environment		Oekotex standard 100



## Fabric

Type of fabric	PVC-coated fiberglass fabric
Weave pattern	twill weave
Widths	1800, 2500, 2850 mm other widths on demand
Roll length (nominally)	50 m / 2850 mm: 40 m

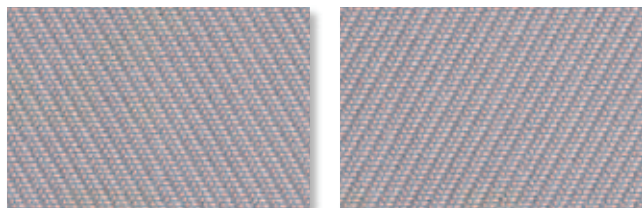
Technical specifications	Average Values	Standard
Thickness	0.60 mm	ISO/DIS 5084.2 (1996)
Mass	474 g/m <sup>2</sup>	ISO 3801 (1977)
Fire resistance	M1 FR	NF P92-503 (1995) NFPA 701 (2010)
Breaking strength	warp 290 daN, weft 210 daN	ISO 13934-1 (1999)
Elongation at break	warp 6,2%, weft 4.4%	ISO 13934-1 (1999)
Tear resistance	warp 9,5 daN, weft 10 daN	ISO 4674 part 1 method A (2003)
Colorfastness (white excluded)	6 scale of blue	ISO 105 B02 (1994)
Air porosity	374 l/m <sup>2</sup> /sec	ISO/DIS 9237 (1995)

## Processing

General - specifications are purely indicative and may not be considered as binding. Colors may vary from the samples shown.

Cutting	crush or ultrasonic; railroad or width out of roll width
Welding	thermal, HF, ultrasonic, sewing
Cleaning	remove dust from the fabric surface, then wipe gently with a humid soft sponge while using a mild detergent

**108101 grey-white A / B**  
Widths: 1800, 2500, 2850 mm



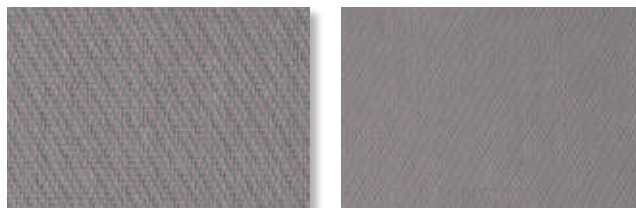
Solar Heat & Light Control Properties

	Ts	Rs	As	Tv	TVdiff	TVdir	Tuv	TVdif-h	Glare control
A	6.5	32.4	61.1	3.4	2.7	0.7	0.9	2.9	Class 2
B	6.5	32.3	61.2	3.4	2.7	0.7	0.9	2.9	Class 2

g<sub>tot</sub>

	A		B		C		D	
	ext.	int.	ext.	int.	ext.	int.	ext.	int.
A Values	0.19	0.53	0.15	0.53	0.10	0.46	0.08	0.28
A Classes	2	0	2	0	3	1	4	2
B Values	0.19	0.53	0.15	0.53	0.10	0.46	0.08	0.28
B Classes	2	0	2	0	3	1	4	2

**108108 grey A / B**  
Widths: 1800, 2500, 2850 mm



Solar Heat & Light Control Properties

	Ts	Rs	As	Tv	TVdiff	TVdir	Tuv	TVdif-h	Glare control
A	4.8	21.6	73.6	2.2	1.5	0.7	0.9	1.9	Class 3
B	4.8	21.6	73.6	2.2	1.5	0.7	0.9	1.9	Class 3

g<sub>tot</sub>

	A		B		C		D	
	ext.	int.	ext.	int.	ext.	int.	ext.	int.
A Values	0.20	0.59	0.15	0.59	0.10	0.50	0.08	0.29
A Classes	2	0	2	0	3	0	4	2
B Values	0.20	0.59	0.15	0.59	0.10	0.50	0.08	0.29
B Classes	2	0	2	0	3	0	4	2

**108112 grey-sand A / B**  
Widths: 1800, 2500, 2850 mm



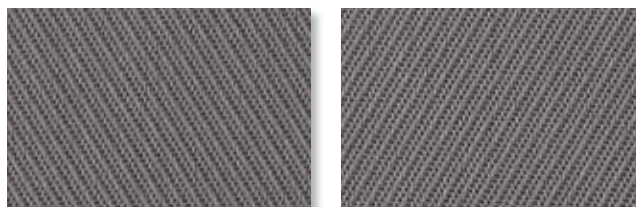
Solar Heat & Light Control Properties

	Ts	Rs	As	Tv	TVdiff	TVdir	Tuv	TVdif-h	Glare control
A	6.0	26.6	67.4	2.8	2.3	0.5	0.7	2.4	Class 2
B	6.0	26.4	67.6	2.8	2.3	0.5	0.7	2.4	Class 2

g<sub>tot</sub>

	A		B		C		D	
	ext.	int.	ext.	int.	ext.	int.	ext.	int.
A Values	0.20	0.57	0.15	0.56	0.10	0.48	0.08	0.29
A Classes	2	0	2	0	3	1	4	2
B Values	0.20	0.57	0.15	0.57	0.10	0.48	0.08	0.29
B Classes	2	0	2	0	3	1	4	2

**108118 grey-black A / B**  
Widths: 1800, 2500, 2850 mm



Solar Heat & Light Control Properties

	Ts	Rs	As	Tv	TVdiff	TVdir	Tuv	TVdif-h	Glare control
A	2.9	16.0	81.1	1.5	1.1	0.4	0.6	1.3	Class 3
B	2.9	16.1	81.1	1.5	1.1	0.4	0.6	1.3	Class 3

g<sub>tot</sub>

	A		B		C		D	
	ext.	int.	ext.	int.	ext.	int.	ext.	int.
A Values	0.20	0.62	0.15	0.61	0.09	0.52	0.08	0.29
A Classes	2	0	2	0	4	0	4	2
B Values	0.20	0.62	0.15	0.62	0.09	0.52	0.08	0.29
B Classes	2	0	2	0	4	0	4	2

**117101 pearl-white A / B**  
Widths: 1800, 2500, 2850 mm



Solar Heat & Light Control Properties

	Ts	Rs	As	Tv	TVdiff	TVdir	Tuv	TVdif-h	Glare control
A	13.6	46.9	39.5	11.9	11.5	0.4	0.8	10.5	Class 1
B	13.6	47.2	39.3	11.9	11.5	0.4	0.8	10.5	Class 1

g<sub>tot</sub>

	A		B		C		D	
	ext.	int.	ext.	int.	ext.	int.	ext.	int.
A Values	0.21	0.46	0.17	0.46	0.12	0.42	0.09	0.27
A Classes	2	1	2	1	3	1	4	2
B Values	0.21	0.46	0.17	0.46	0.12	0.42	0.09	0.27
B Classes	2	1	2	1	3	1	4	2

**117108 pearl-grey A / B**  
Widths: 1800, 2500, 2850 mm



Solar Heat & Light Control Properties

	Ts	Rs	As	Tv	TVdiff	TVdir	Tuv	TVdif-h	Glare control
A	8.4	31.4	60.2	6.1	5.7	0.4	0.8	5.4	Class 1
B	8.4	31.5	60.1	6.1	5.7	0.4	0.8	5.4	Class 1

g<sub>tot</sub>

	A		B		C		D	
	ext.	int.	ext.	int.	ext.	int.	ext.	int.
A Values	0.20	0.54	0.16	0.54	0.11	0.47	0.09	0.28
A Classes	2	0	2	0	3	1	4	2
B Values	0.20	0.54	0.16	0.54	0.11	0.47	0.09	0.28
B Classes	2	0	2	0	3	1	4	2

**117117** **pearl** A / B  
Widths: 1800, 2500, 2850 mm



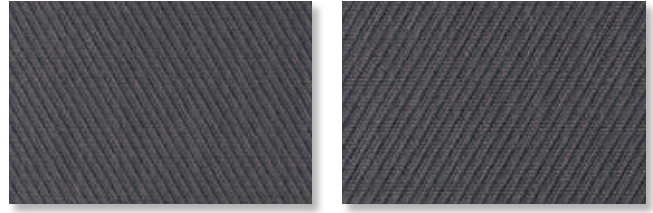
Solar Heat & Light Control Properties

	Ts	Rs	As	Tv	TVdiff	TVdir	Tuv	TVdif-h	Glare control
A	12.0	38.9	49.1	10.4	10.0	0.3	0.7	9.2	Class 1
B	12.0	38.9	49.1	10.4	10.0	0.3	0.7	9.2	Class 1

gtot

	A		B		C		D	
	ext.	int.	ext.	int.	ext.	int.	ext.	int.
A Values	0.21	0.50	0.18	0.50	0.12	0.44	0.09	0.27
A Classes	2	0	2	0	3	1	4	2
B Values	0.21	0.50	0.18	0.50	0.12	0.44	0.09	0.27
B Classes	2	0	2	0	3	1	4	2

**118108** **black-grey** A / B  
Widths: 1800, 2500, 2850 mm



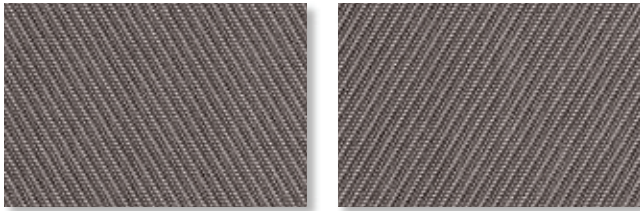
Solar Heat & Light Control Properties

	Ts	Rs	As	Tv	TVdiff	TVdir	Tuv	TVdif-h	Glare control
A	0.8	10.2	89.0	0.6	0.3	0.3	0.5	0.5	Class 3
B	0.8	10.1	89.1	0.6	0.3	0.3	0.5	0.5	Class 3

gtot

	A		B		C		D	
	ext.	int.	ext.	int.	ext.	int.	ext.	int.
A Values	0.20	0.65	0.14	0.64	0.08	0.53	0.08	0.30
A Classes	2	0	3	0	4	0	4	2
B Values	0.20	0.65	0.14	0.64	0.08	0.53	0.08	0.30
B Classes	2	0	3	0	4	0	4	2

**118112** **black-sand** A / B  
Widths: 1800, 2500, 2850 mm



Solar Heat & Light Control Properties

	Ts	Rs	As	Tv	TVdiff	TVdir	Tuv	TVdif-h	Glare control
A	0.8	14.0	85.2	0.5	0.4	0.1	0.2	0.4	Class 3
B	0.8	14.0	85.2	0.5	0.4	0.1	0.2	0.4	Class 3

gtot

	A		B		C		D	
	ext.	int.	ext.	int.	ext.	int.	ext.	int.
A Values	0.19	0.63	0.14	0.62	0.08	0.52	0.07	0.30
A Classes	2	0	3	0	4	0	4	2
B Values	0.19	0.63	0.14	0.63	0.08	0.52	0.07	0.30
B Classes	2	0	3	0	4	0	4	2

**118118** **black** A / B  
Widths: 1800, 2500, 2850 mm



Solar Heat & Light Control Properties

	Ts	Rs	As	Tv	TVdiff	TVdir	Tuv	TVdif-h	Glare control
A	0.4	6.69	92.9	0.3	0.2	0.2	0.3	0.3	Class 3
B	0.4	6.69	92.9	0.3	0.2	0.2	0.3	0.3	Class 3

gtot

	A		B		C		D	
	ext.	int.	ext.	int.	ext.	int.	ext.	int.
A Values	0.20	0.67	0.15	0.66	0.08	0.55	0.08	0.30
A Classes	2	0	2	0	4	0	4	2
B Values	0.20	0.67	0.15	0.66	0.08	0.55	0.08	0.30
B Classes	2	0	2	0	4	0	4	2